



Hidden Gem

# Kanan

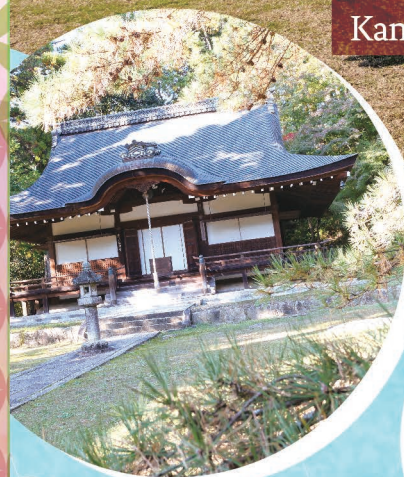
Osaka  
Kanan Town  
Sightseeing Guide

FIND YOUR GEM  
OSAKA

# KANAN



Kanan Town Sightseeing Guide





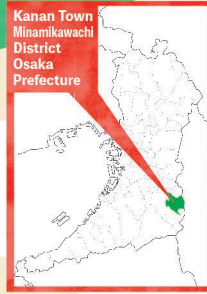


Welcome to!

# Kanan Town!

## What's Kanan Town like?

**Kanan Town** is located in the southeast region of Osaka Prefecture, approximately 25 km from the city center. Despite its proximity to the city, it is full of natural beauty, making it the ideal "hidden gem" getaway! The hilly areas, which account for one-third of the town, are designated as Kongo Ikoma Kisen Quasi-National Park and are endowed with abundant nature. The Katsuragi Shugendo Sutra Mounds, part of Japan's heritage, can also be found on the Diamond Trail, which winds through the Katsuragi mountain range and the precincts of Koki-ji Temple. It is also adjacent to the Takeuchi Kaido, which connects the Yamato region to the site of Naniwa Palace, and there are numerous kofun (burial mounds) and ancient buildings across the area. Tadao Ando's Chikatsu Asuka Museum is an excellent resource for learning about the region's history! If you want to have fun with your family, World Ranch is the place to go. You may engage with adorable animals, taste delicious BBQs, and enjoy the stunning scenery. Kanan Town is a thriving agricultural town, with many farmers growing figs and strawberries, which you can pick when they are in season. Roadside Station Kanan sells various locally grown products, including vegetables, fruit, and houseplants that were gathered fresh that morning. Recently, the number of chic cafés, restaurants, and dog parks has increased, so why not visit while it's still a "hidden gem"?!



Let's go out together!



### How to reach Kanan Town

If you are driving, the town is roughly 10 km along Route 309 from the Tannan intersection on the Osaka Chuo Bellline. The town is also located about 3 km south of the Minami Hanna Road Habikino-higashi Interchange and the Taishi Interchange. If you are traveling by bus, take the Kongo Furusato Bus from Kintetsu Kishi or Tondabayashi Station to reach town. To get around town, take the Kana-chan Bus, which has a charming painted interior.



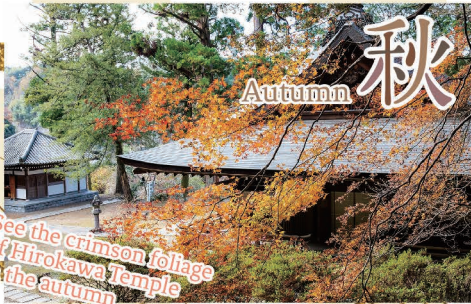
See the cherry blossoms at Shirakiyama Park in the spring. The blossoms are stunning in the vast park!



Spring 春



Visit World Ranch in the summer! 夏 Summer



Autumn 秋



Winter 冬

Pick strawberries in the winter

## History



The Kankoji Kofun Cluster consisted of more than a hundred kofuns, which had begun to take shape atop the Kankoji hills in the early Kofun period (4th century). From the northern portion of town to Taishi, the Ichisuka Kofun Cluster had expanded to approximately 200 kofuns by the late Kofun period (late 6th to early 7th century). The Kanayama Kofun in Seryutani stands out as a "soen-fun," an extremely rare example even in Japan. At the Chikatsu Asuka Museum, you may see these kofun clusters displayed in excellent detail.

## Kanan's History

Kanan was founded in 1956. Relics from the town's long history include Jomon-period (14,000 to 300 BC) earthenware, which dates back around 10,000 years; settlements from the mid to late Yayoi period (300 BC to 300 AD); and kofuns constructed during the Kofun period. The Nambokucho period (1336 to 1392) saw the construction of numerous mountain-top castles, and by the 16th century, the region devastated by the maelstrom of war had regenerated into a town. At present, the town's reputation is that of an agricultural suburb.



Kofun burial mounds

## Environment



The ridges of the Katsuragi mountain range (Diamond Trail) extend to the east, while the River Ishikawa runs to the west. One-third of the town is mountainous and designated as Kongo Ikoma Kisen Quasi-National Park. Hills extend out from the mountain to form the city center. It is rich in nature and boasts stunning landscapes. The hills offer views of the Osaka Plain and, on a clear day, Mt. Rokko and Awaji Island.



## Kanan's Mascot Kana-chan

Kana-chan is a cheerful and spirited girl who was developed to promote Kanan Town. Her most appealing feature is her haircut, which is formed like the "Kanayama Kofun", Japan's largest soen-fun burial mound.

Buy LINE stickers!



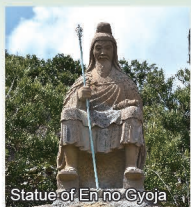


# Katsuragi Shugen

Japan Heritage



Mount Katsuragi



Statue of En no Gyoja

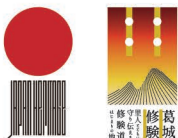


A practitioner's outfit (Shipporyuji Temple)



Kokiiji Temple

The Katsuragi mountain range, spanning Wakayama, Osaka, and Nara, is the origin of Shugendo, a form of mountain asceticism founded by En no Gyoja. En no Gyoja, who practiced Shugendo in this location, buried the scriptures of the Lotus Sutra in 28 sutra mounds, one at a time. The term "Katsuragi Shugendo" refers to the practice of visiting En no Gyoja-related temples and shrines, as well as waterfalls, rocks, and other ascetic sites. The Agency for Cultural Affairs designated Katsuragi Shugendo as Japan Heritage in 2020. Kanan has two sutra mounds: the 24th, Hiraishi Pass Myo-on Bosatsu-hon, and the 25th, Kokiiji Kogebata Kanzeon Bosatsu Fumonhon.



► Scan for details  
Japan Heritage Katsuragi  
Shugen official website



The 24th sutra mound

## Hiraishi Pass Myo-on Bosatsuhon



The sutra mound is located in Hiraishi Pass, on Mt. Iwahashi's northern crest, between Mts. Nijo and Katsuragi. The mound and two stone statues of En no Gyoja and Acala are located on a slope right before reaching the pass. Kanan is a 3-kilometer hike from Hiraishi that takes approximately one hour. Please use caution since there are some steep points along the road.

The 25th sutra mound

## Kokiiji Kogebata Kanzeon Bosatsu Fumonhon



The sutra mound can be found within the grounds of Kokiiji Temple, which was supposedly established by En no Gyoja during Emperor Monmu's reign. Write a haiku before you go to the sutra mound. Forty to fifty meters behind the main hall, you will find a shrine devoted to Acala in the bosom of a large stone. You are sure to experience an incredibly solemn and noble ambiance.

# Kanan's

# Danjiri

Kanan's Danjiri takes place every October.

Townfolk parade through the town, singing a special song called hikiuta.



Kanan's Danjiris feature a protruding front end! Aren't they cool?!



A must-see!

## Kanan Danjiri's Highlights

Niwaka Shibai performances



Youth groups from various districts perform Kawachi Kiwaka (an improvised short play), which is thought to be the foundation of Kamigata Geino (a type of performance that originated in Kyoto and Osaka), on stage atop the float.



At a peak point of the event, the float goes amok as the bearers dash into the shrine grounds and sway it from side to side.



# Roadside station Kanan

**Get farm-fresh vegetables!**

**Super fresh!**

Farmers bring in the veggies and fruit they collected that morning and put them on the shelves. Farmers arrange fresh, aromatic, and shiny vegetables—eggplant, cucumber, tomato, daikon, taro, cabbage, napa cabbage, leek, spinach, etc.—in rows! You must go before they sell out! The shop opens at 9 a.m. (weekdays) and 8:30 a.m. (weekends and holidays), so please arrive early! Plants, flowers, and sweet treats are also available.

Exterior view of the roadside station

Address: 523-1 Koyama, Kanan-cho  
Phone: 0721-90-3911



So many ornamental flowers, too!



A whole lot of local vegetables!

Scan for travel information

## We grow these! Farmers we're proud of in Kanan

**Forestry is also Kanan's essential industry.**

**Mr. Shigeo Hayashi**

We ship directly to the roadside station!

**Mr. Daiki Uejou**

I protect our woodlands, with a chainsaw as my buddy!

In our 1,487-square-meter greenhouse, we rotate between growing eggplant and cucumber. Greenhouse eggplants stand out for their thin skin, tender flesh, and exquisite flavor. Eggplants are in season from May to June, whereas cucumbers are from September to October. In addition, we raise Ishikawa Wase taros, our local variety, on our 991-square-meter farm. They have a sticky consistency. We're about to deliver our cucumbers to the roadside station!

Mr. Kamijo works as a forester in Minamikanan. He fulfilled his childhood aspiration of safeguarding Kanan's lush landscapes, a dream he documented and saw published in the My Dream section of Kanan Town's public relations magazine. He safeguards and tenderly nurtures the verdant mountains that his ancestors, such as his grandfather and father, had protected. Through the consistent practices of planting, weeding, thinning, felling, and land preparation, he cultivates magnificent Japanese cedar and Japanese cypress. The Kawachi Forestry employs a technique of planting trees close together, which encourages them to grow upright. This method includes thinning the trees to permit sunlight to penetrate, facilitating their growth to a substantial size.

**Its shape is uncommon, even in Japan!**

## Kanayama Kofun

**Highlights**

This is a unique gourd-shaped kofun featuring two round mounds, believed to have been constructed during the late Kofun period, which spans from the end of the 6th century to the 7th century, shortly after the keyhole-shaped kofuns. The kofun measures 85.8 meters in length, with a total length of 102 meters when including the surrounding moat. It stands as one of the largest twin round kofun in Japan, and from an aerial perspective, it resembles two Baumkuchen positioned next to each other. Designated as a national historic site in 1991, it serves as a popular park where visitors can unwind and explore historical insights.

Address 185-1 Seryutani, Kanan-cho

**The sight of the kofun-shaped exhibition room stirs up emotions!**

## Chikatsu Asuka Museum

**Highlights**

Situated within the verdant Fudoki no Oka Park, the Chikatsu Asuka Museum, designed by architect Tadao Ando, harmoniously integrates with the surrounding landscape as a contemporary kofun. The interior is designed in the form of a keyhole-shaped kofun, inspired by the Tomb of Emperor Nintoku, which is recognized as a World Heritage Site. As visitors step into the museum, they will be greeted by an exhibition showcasing the Ichisuka Kofun Cluster and Taishi Mausoleum situated on the premises, accompanied by the haniwa clay figures and earthenware that have been unearthed. Following this, the museum encourages visitors to explore a large diorama of the Mozu-Furuichi Kofun Cluster, an acknowledged World Heritage Site. Allow your imagination to soar and relish the allure of historical romanticism. Why not explore and delve into the fascinating history of Kanan?

Address 299 Higashiyama, Kanan-cho  
0721-93-8321 (Switchboard)

**Diamond Trail**

**Kume no Iwahashi**

**Jinmen rock**

## Mount Iwahashi and Kume no Iwahashi

**Highlights**

Iwahashi stands as a prominent peak in the Katsuragi mountain range, reaching an altitude of 658.8 meters. At the summit, Kanan Town is located on the Osaka side, while Katsuragi City is situated on the Nara prefecture side. Iwahashi, located along the Katsuragi Shugendo route and the extensive Diamond Trail, derives its name from a legend in which En no Gyoja commanded the Japanese gods to construct a rock bridge leading to Mt. Kimpo. Close to the summit, the remnants of the "Kume no Iwahashi" bridge are visible, and along the trail, one can observe large boulders and uniquely shaped rocks like "Nabekama," "Hokodate," "Tainai-kuguri," and "Jinmeni." This mountain climbing route offers a remarkable experience, allowing you to immerse yourself in history, appreciate the beauty of nature, and discover numerous fascinating sights.

Address Hiraishi, Kanan-cho



# Town Tour Route



START  
1

Roadside Station Kanan

9:00 - 10:00

Save the gifts for last? No, it's best to go in the morning to buy delicious vegetables! Savor vegetables that are picked in the morning.



Drive there yourself!

History Exploration version

Kanayama Kofun

10:30 - 11:00

Explore the rare gourd-shaped kofun from the late Kofun period!



See page 6 for more information.

2

Hirokawa Temple

11:30 - 12:30

Hirokawa Temple, famous for its cherry blossoms, and woodlands rich in history and culture



See page 8 for more information.

3

Natt's Cafe

13:00 - 14:00

Have lunch to get ready for the afternoon!



See page 16 for more information.

4



The route is also great for cycling!

GOAL  
5

Osaka Prefectural Chikatsu Asuka Museum & Chikatsu Asuka Fudoki-No-Oka Historical Park

14:30 - 16:00

Learn about the culture that built the kofuns at Tadao Ando's contemporary museum, experience Asuka's historical romanticism, and explore the park with a kofun cluster.



See page 6 for more information.



# Route

START  
1

World Ranch

10:00 - 12:30

There is a dog park and the views are fantastic! You can also have lunch here

See page 11 for more information.



2

Kankoji Kofun Park

13:30 - 14:30

Have fun walking in this expansive park



Take a bus or walk!

START  
GOAL

Kintetsu Nagano Line Kishi Station

10:00/16:00



See page 8 for more information.

Kokiji Temple

12:20 - 13:00

The 25th sutra mound of Japan Heritage Katsuragi Shugen! Try zen meditation to find your center!

See page 6 for more information.

Osaka Prefectural Chikatsu Asuka Fudoki-No-Oka Historical Park

10:40 - 11:00

Experience Asuka's historical romanticism and wander through the park featuring a kofun cluster.



Iwafune Shrine

11:50 - 12:10

There are gigantic boulders and unusual rock formations, and traditions such as the Kento Festival are passed down.



Site of Hiraishi Castle

11:30 - 11:40

The mountaintop castle ruins, recognized by the prefecture, are situated in Hiraishi!



Roadside Station Kanan

16:00 - 16:30

To cap off the day, stop by Roadside Station Kanan to buy vegetables, fruit, and gifts!



See page 5 for more information.

GOAL  
4

ROCK BASE

15:00 - 15:30

Dogs are welcome at this stylish café



See page 17 for more information.

3





## Hokkeji Temple

### Highlights

In 1439, a monk named Nichiryu, visiting the area to appease the souls of those lost during the Namboku-cho period (1336 to 1392), ventured into the mountains and recited the Lotus Sutra to aid the villagers suffering from drought. As he chanted, water began to flow from the mountainside. The villagers became devoted to the Lotus Sutra following this miracle, leading to the establishment of Hokke Temple. For more than 580 years, this sacred water has flowed continuously without interruption.

Address 247 Kano, Kanan-cho  
Phone 0721-93-3023



## Kokiji Temple

### Highlights

This temple is renowned as a branch of the Shingon Buddhist sect Kongo Temple, established by En no Gyoja, the founder of Shugendo. Kukai, the esteemed Buddhist priest, is said to have trained here, and during the Middle Ages, the temple experienced significant prosperity. However, it faced a temporary decline due to fires that occurred during the Genko War in 1331. It was, however, restored by a Shingon sect priest named Jun during the late Edo period (1603-1867). The temple features a wooden seated statue of Benzaiten (hidden from public view), a 13-story stone pagoda honoring the visit of Emperor Go-Toba, and the tomb of the poet Tsuyuko Isonokami. A zen hall is available where visitors can engage in meditation. The 25th sutra mound of Katsuragi Shugen, a Japanese Heritage Site, is situated behind the main hall. Access to the temple is granted only upon completing a haiku poem. Compose a poem reflecting your present emotions and connect with the temple from within your heart. Haiku embodies the core of the Japanese spirit.

Address 539 Hiraishi, Kanan-cho Phone 0721-93-2924



## Hirokawa Temple

### Highlights

This ancient temple nestled in the mountains was established during the Nara period (710-784) and subsequently evolved into an esoteric Shingon Buddhist temple, remaining in use today. Saigyō, a poet from the late Heian period (794-1185), is recognized for having died here during the cherry blossom season. He expressed this desire in a poem: "I wish to die beneath the cherry blossoms in the spring, during the full moon of the 15th day of the second month." The temple grounds feature Saigyō's tomb and Saigyō Hall, while the main temple garden and Saigyō Memorial Hall welcome visitors during the spring and autumn. During spring, the cherry blossoms flourish abundantly, while in autumn, the leaves display their stunning beauty. Furthermore, the Sakurayama area has been transformed into the "Hirokawa Temple History and Culture Forest." Currently, efforts are underway to plant cherry trees and maintain the landscape as part of the "Hirokawa Temple Millennium Forest Creation Project."

Address 43 Hirokawa, Kanan-cho Phone 0721-93-2814



# Kanan Sightseeing Map

Find a Great Spot



## World Ranch

### Highlights

World Ranch was established with the idea of uniting people, nature, and animals. Upon entering through the main gate, you will encounter a spacious pasture and petting area spanning 5,000 square meters, where you can engage with animals like sheep, goats, mini pigs, and chickens and take pleasure in feeding them. As you proceed, you will arrive at a grassy expanse that offers a breathtaking view of the Osaka Plain.

As you proceed, you can enjoy a pony hack or a goat/rabbit walk on Wakuwaku Hill while taking in the view of the dog park! Numerous animal shows and events are available, and if you find yourself hungry, there are restaurants and BBQs to enjoy. No matter if you're with family, friends, or on a romantic outing, enjoyment is guaranteed! Cottages and log cabins are available for overnight stays!

Address 1456-2 Shiraki, Kanan-cho  
Phone 0721-93-6655



Dogs can also join in the fun!



Delicious air and meat!



## Koubou Minami pottery school

### Highlights

"Why not create a unique piece that stands alone in the world? It's perfectly fine, even if it's your first time! We will provide you with the support you need to create an excellent piece of work." The owner and his wife greeted us with warm smiles. A one-day course is available, allowing you to create a piece of work that

suits you, whether it be hand-building, hand-throwing, or slab-building. Koubou Minami is located adjacent to Kanayama Kofun. The Koubou 373 logo crafted from pottery is charming, and the classroom exudes a delightful ambiance. Why not enjoy some peaceful moments in nature, working with clay?

Address 153-5 Seryutani, Kanan-cho  
Phone 0721-93-8373



Adorable potteries welcome you



Turn your ideas into reality.



The highlights of hiking Mt. Iwahashi are the odd rock formations and enormous rocks!

Suggested scenic spots



Suggested scenic spots



Southernmost tip of Kanan Town



Stone bridge of Aoge

Mount Katsuragi's trailhead





# Enjoy strawberry-picking in Kanan!

The delightful scent will surely quicken your heartbeat with anticipation as you embark on your strawberry picking adventure! Four suggested locations for families and groups



## Ichigoya Tsumugi

Ichigoya Tsumugi opened in 2023. Strawberry picking is available from March through late May. Head over to the website to reserve your spot! Enjoy a generous bite of red, juicy strawberries!

- ◆(Opening hours) 10:00 - 15:30
- ◆Holidays: Check via the website and Instagram account
- ◆Parking lot is available for 5 vehicles

250 Seryutani, Kanan-cho Phone: 080-2309-6411  
How to reach there: Take the Kongo Furusato Bus Shiraki Route to Seryutani, and then walk for 5 min.



## Ichigoya GARTEN BERREN

At GARTENBERREN, we provide the opportunity for strawberry picking (by weight) and sell freshly picked ripe strawberries from vending machines located at the entrance to the farm. At our farm, you can savor over 10 different types of strawberries.

- \*The vending machine is available until 19:00. The farm opening hours are updated on Google Maps.
- ◆(Opening hours) 10:00 - 18:00
- ◆The farm is open to visitors during the strawberry-selling season.
- ◆Parking lot is available for 3 vehicles

771 Koyama, Kanan-cho Phone: 080-9309-2234  
How to reach there: Take the Kongo Furusato Bus Chihaya Route to Kankoji, and then walk for 10 min.



## Ozaki Strawberry Farm

45-min strawberry picking  
The berries are grown on raised beds, allowing you to pick them without the need to squat!

We grow our strawberries with pristine water from the Katsuragi mountains.

- Period: Late January - late April
- Times: 11:00, 12:00, 13:00, and 14:00 \*By reservation only
- ◆(Start times) 11:00, 12:00, 13:00, 14:00
- ◆Parking lot is available for 5 vehicles

382-1 Terada, Kanan-cho Phone: 090-9874-4292

How to reach there: Take the Kongo Furusato Bus Kawachi Route, Shiraki Route, or Sakurazaka Loop Route to Terada, and then walk for 6 min, or take the Kongo Furusato Bus Kawachi Route to Sogo Taikukan-Mae, and then walk for 2 min.



## Couco no Hatake farm shop

We grow our strawberries in soil with the help of Osaka Eco Agricultural Products, which employ 50% fewer agrochemicals and chemical fertilizers. Enjoy the rich umami and depth that only soils can offer. Four varieties of strawberries await your enjoyment: Beni Hoppe, Hoshi no Kirameki, Oi C Berry, and Hokowase. Please make a reservation for strawberry picking at least one day in advance. The farm shop offers strawberries for purchase.

- ◆Sales by reservation only (Opening hours) 11:00 - 12:00
- ◆No scheduled holidays
- ◆Parking lot is available for 5 vehicles

127 Koyama, Kanan-cho Phone: 090-3710-1060

How to reach there: Take the Kongo Furusato Bus Chihaya Route to Koyama, and then walk for 3 min, or take the Kana-chan Bus to Koyama, and then walk for 3 min.



11

Authentic Handmade Soba Noodles  
Sobakimi.

From 100% buckwheat flour to takigumomi (whole buckwheat, including the hulls) and nihachi soba (8 buckwheat, 2 wheat)... Enjoy authentic soba noodles.

We source fresh buckwheat flour that features a delightful flavor and provide authentic, freshly made handmade soba. We craft our dipping sauce with a touch of sweetness, enhanced by the essence of bonito. We deliver to distant locations as well. You can also make reservations and purchases through LINE!

Address: 3-2-14 Suzumidai, Kanan-cho

Phone: 090-5548-1788

Opening hours: 9:00 - 15:00 \*Saturdays and Sundays only (While availability lasts)

How to reach there: Take the Kana-chan Bus to Suzumidai Sancho-mae, or the Kongo Furusato Bus Sakurazaka Loop Route to Suzumidai Sancho-mae.



Instagram



LINE

10

Taster course  
Fukuoji  
Kimono-Making Class

Hakama trousers for women

Appreciate the designs and comfort that only custom clothing can offer.



We can complete a woman's hakama and happi coat in just 1-2 days. We will supply the fabric and tools! Why not attend different events, such as graduation ceremonies, while donning a handmade hakama? The fee for the experience is ¥20,000 for a woman's hakama and ¥15,000 for a happi coat. We invite you to explore this exceptional experience! If you are interested, do not hesitate to reach out to us.

Address: 4-15-13 Daiho Kanan-cho

Phone: 070-9001-5525 \*We will return your call if we're not available to take your call.

Opening hours: 9:00 - 17:00 \*Saturdays and Sundays only.

Parking lot is available

How to reach there: Take the Kongo Furusato Bus Ishikawa or Hannan Route to Daiho Yoncho-mae, and then walk for 8 min.

## Kanan is fun! You've got to visit!

13

Supermarket  
Sunplaza  
Kanan Geidai-mae



Aspiring to be a supermarket that delivers assurance and well-being to the table.

The store sells produce sourced directly from diverse regions, featuring organic JAS produce and Osaka Eco Agricultural Products. They strive to minimize additives in the prepared foods available in the store, including boxed lunches, and to provide products that highlight the natural flavors of the ingredients.

Address: 678 Higashiyama, Kanan-cho

Phone: 0721-90-4741

Opening hours: 7:00 - midnight

How to reach there: Take the Kongo Furusato Bus Ishikawa Route to Ichisuka, or the Kongo Bus Furusato Bus Ishikawa Route or Hannan Route to Higashiyama.



URL



Instagram

12

World-class textile processing  
Toyota Shigyo Co., Ltd.



Currently available are singed cotton T-shirts, DRYON T-shirts, and more!

These T-shirts are original creations that fully leverage technology acknowledged by premium brands in Japan and abroad.

The process known as "gas-singeing" is uncommon even worldwide, and this company stands out as the sole user of this technology in Osaka. They handle individual threads by subjecting them to fire to eliminate the fuzz. The factory offers T-shirts crafted with attention to detail by a company renowned for its expertise in thread processing.

Address: 487-4 Shiraki, Kanan-cho

Phone: 0721-90-2227 \*Please call before you visit.

Opening hours: 10:00 - 16:00 (Closed on Saturdays, Sundays, and holidays)

How to reach there: Take the Kongo Furusato Bus Shiraki or Sakurazaka Loop Route to Shiraki, and then walk for 8 min.



URL



Instagram



7

Café

Chikatsu Café

**A must-try!**  
Kofun Parfait



Our café is situated within the Chikatsu Asuka Museum. Take a moment to unwind and savor a cup of tea while surrounded by nature. In alignment with the museum's theme, we offer delightful menu items and light meals, including the Kofun Parfait and kofun-inspired shaved ice for the summer season. We warmly invite you to come and visit us.



**Address:** 299 Higashiyama, Kanan-cho (inside the Chikatsu Asuka Museum) **Phone:** 0721-93-4463  
**Opening hours:** Weekdays 11:00 - 15:00, Saturdays, Sundays, and holidays 11:00 - 16:00  
(Closed on Mondays. \*Closed on Tuesday if Monday is a holiday)  
**How to reach there:** From Kishi or Tondabayashi, board a bus heading to the Chikatsu Asuka Museum. Alight at the final stop, Chikatsu Asuka Museum, and proceed on foot for 600 meters.



4

Café

Ichigo Batake no Maimu-chan



**A must-try!**

Strawberry jam  
Strawberry croissant  
Gluten-free sandwich loaf



For 25 years, Yosshi Noen has cultivated strawberries in Kanan, employing compost and enzyme fertilizers. At Ichigo Batake Maimu-chan, we utilize these strawberries along with other carefully chosen ingredients to create rice flour bread, jam, and various other products.

**Address:** 1279 Kankoji, Kanan-cho **Phone:** 0721-55-4350  
**Opening hours:** Every Saturday and Sunday 9:00 - 16:00  
Mondays: 9:30 - 12:00  
**How to reach there:** Take the Kongo Furusato Bus Chihaya Route to Deyashiki, and then walk for 10 min.



3

Café

GO WEST COFFEE



**A must-try!**

Latte  
Spicy curry  
Apple pound cake  
Roasted sweet potato cheesecake

The café featuring hammocks outside is located opposite Hirokawa Temple. They have bonfires in the winter. They also operate a kominka inn during the summer, just a 2-minute walk away. The café offers a selection of coffee brewed from espresso beans, organic teas, seasonal baked treats, and cheesecakes made with Hokkaido wheat, along with spicy curries.

**Address:** 49 Hirokawa, Kanan-cho **Phone:** 080-5364-0922  
**Opening hours:** 10:30 - 17:00  
**How to reach there:** Take the Kongo Furusato Bus Kawachi Route to Kawachi, and then walk for 5 min, or take the Kongo Furusato Bus Sakurazaka Loop Route to Kanan Sakura Shogakko-mae, and then walk for 9 min.



# Delicious Kanan Let's go!

# Fabulous cafés in Kanan ☺☺

9

Soba restaurant

Soba Kobo Kenzo



**A must-try!**  
Chilled soba with tempura

We offer freshly cooked noodles handcrafted from home-milled buckwheat flour. Tempura is served hot and freshly fried.

**Address:** 1-32-4 Daiho, Kanan-cho  
**Phone:** 090-5364-7151  
**Opening hours:** 11:00 - 14:00 (Closed on Wednesdays and Thursdays)  
**How to reach there:** Take the Kongo Furusato Bus Ishikawa or Hannan Route to Daiho Nichome, and then walk for a minute.



8

Café

HATANAKA



We trust that you will take pleasure in observing the cakes being crafted before your eyes, a rare experience, and that you will find joy in tasting the unique cakes that are not commonly found in patisseries.

**Address:** Ueda Tenant East Wing C, 1355-1 Shiraki, Kanan-cho  
**Phone:** 0721-69-4950  
**Opening hours:** 11:00 - 18:00 (Closed on Sundays and Mondays)  
\*Open for two Sundays a month.

**How to reach there:** Take the Kongo Furusato Bus Kawachi, Shiraki, or Sakurazaka Loop Route to Terada, and then walk for a minute.



**A must-try!**  
Mont Blanc, freshly made, served with quiche and salad or accompanied by croque madame, soup, and salad.

6

Café

Kissa-Sono



Everyone is welcome to come here and unwind. When you arrive at the café, you will find someone to talk to and smile with. Won't you come and have a coffee with us?

**Address:** 104 Ichisuka, Kanan-cho  
**Phone:** 080-6156-2844  
**Opening hours:** 8:00 - 16:00 (Closed on Sundays and Mondays)  
**How to reach there:** Take the Kana-chan Bus to Ichisuka, and then walk for 3 min.



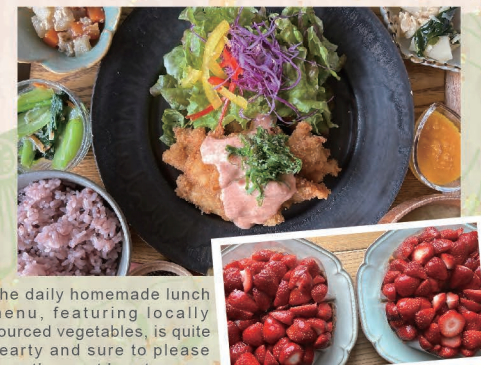
**A must-try!**

The café offers a diverse selection of menu options, featuring an all-day breakfast and lunch starting at 11:00, alongside sandwiches, chifon cakes, seasonal shaved ice, and zenzai, as well as coffee, teas, blended fruit juices, and more.

5

Café

Natt's Cafe



The daily homemade lunch menu, featuring locally sourced vegetables, is quite hearty and sure to please even the most hearty appetites. We handcraft all of our cakes, with the locally sourced seasonal fruit being a particular favorite.

**Address:** 695 Kano, Kanan-cho  
**Phone:** 0721-26-9393  
**Opening hours:** 11:00 - 15:00 (Closed on Wednesdays and Sundays)  
**How to reach there:** Take the Kongo Furusato Bus Kawachi Route to Minamikano, and then walk for 5 min.

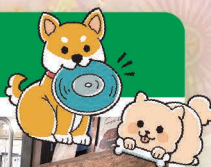


**A must-try!**

Natt's lunch, Natt's bento  
Tart of the season, Parfait of the season



# Dog-friendly café



1

## Café ROCK BASE

In a renovated old private house in Osaka's Kanan Town, we offer a selection of outdoor gear and household goods. Our facility features a parking lot and a café area, providing you with a place to unwind and escape the clamor of daily life. Customers with dogs are warmly welcomed. The shop's mascots at ROCK BASE are Koma-chan and Uta-chan. We have a variety of merchandise, outdoor equipment, and pet supplies, so even if you aren't visiting the café, you can stop by and browse. If you're looking for a gift for someone, ROCK BASE is sure to have something! We'd be delighted if you thought of us in that way.



A must-try!  
Hashed omurice



A must-try!  
Cocoa cookies  
Basque cheesecake



Address: 304-3 Koyama, Kanan-cho  
Phone: 050-8887-2644  
Opening hours: 10:00 - 18:00  
(Closed on Tuesdays and other days as well)



URL  
instagram

# Delicious Kanan

We are excited to share a curated selection of 9 establishments for your enjoyment.

This includes a chic café that features locally sourced fruits and vegetables picked in the morning, a restaurant serving delectable dishes, a traditional Japanese-style confectioner, a beloved eatery serving classic yet delightful meals, and a shop that boasts a charming mascot dog!!



Delicious Kanan

See pages 15 to 18!



# Fun Kanan

We are excited to present our thoughtfully curated selection of 4 shops in Kanan, ranging from a kimono-making experience and a world-class textile processing company to a handmade soba noodle shop and a local supermarket!

Fun Kanan

See page 14!



# Let's go!

2

## Café Community Café BOBOBO



Chickens roam freely at our café, which is housed in an old traditional building. We serve English pastries such as scones and teas. We hand-craft all of our pastries using largely agrochemical-free ingredients.

A must-try!

Scones, Chocolate brownies, Carrot cake, Coffee, Black Tea

Address: 150 Kawachi, Kanan-cho  
Phone: 080-3100-4934  
Opening hours: 11:00 - 17:00 \*Open on Saturdays and Sundays only  
How to reach there: Take the Kongo Furusato Bus Kawachi Route to Kawachi, and then walk for 10 min.



Kanan's vegetables are grabbing attention now!

ABITACOLO, a restaurant in Osaka, uses them, too.



ABITACOLO

We are promoting Kanan cuisine in Kitahama, Osaka's central district, using Kanan ingredients! We are now providing meal vouchers for set meals as a gift in exchange for a hometown tax donation.

Address: 201, 2F Ebisu Doshu Bldg., 1-3-3 Doshu, Chuo-ku, Osaka  
Phone: 06-7710-6616



# Kanan's proud agricultural products

So much freshly picked seasonal produce!

The primary industry is rice production, featuring varieties like Hinohikari and Kinumusume. Additionally, a significant quantity of vegetables, including eggplant, cucumber, and taro, along with figs and other fruit trees, are cultivated. The cultivation of "traditional Naniwa vegetables" includes Kema cucumber and Katsuma pumpkin.



## Experience the magic of Kanan through hometown tax!

◆ About Kanan Hometown Tax (Eco Art Kanan)

Kanan offers attractive gifts and experiences featuring local specialties. The contributions we receive will be allocated to initiatives like community development and childcare services. We hope you will have the opportunity to discover the marvels of Kanan!

[Note]

\*The thank you gift will be sent exclusively to individuals residing outside of Kanan Town.



Scan here for more information!